

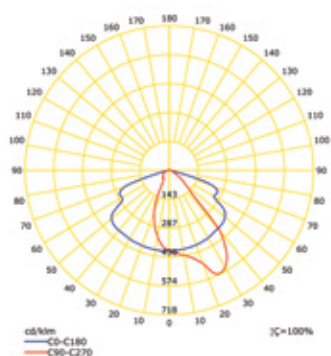
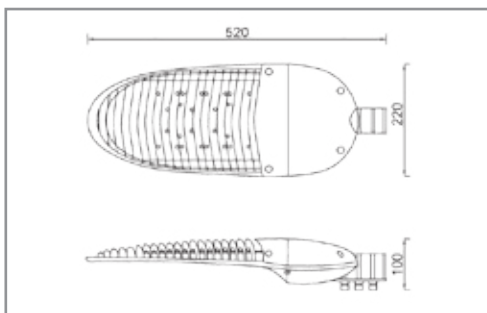
LIT-34100



Range of high-performance public lighting luminaires designed and created for use with LED light sources. Thanks to their compact shape, modern design, high photometric performance, availability of different power levels and different color temperatures. Die-cast Aluminium body.

APPLICATIONS

Street lighting, Parking, etc...

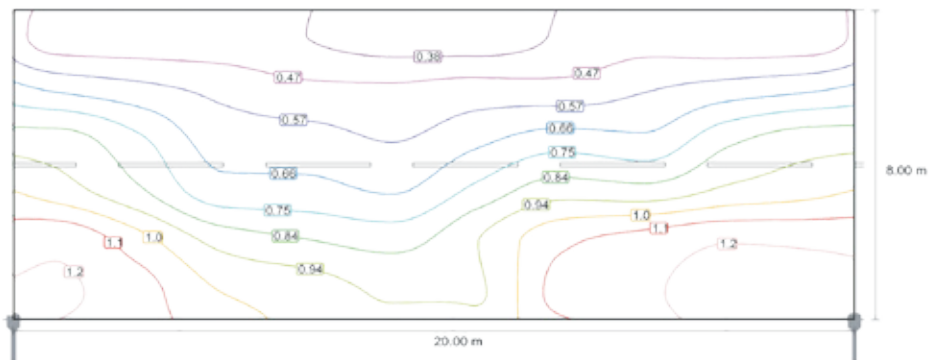
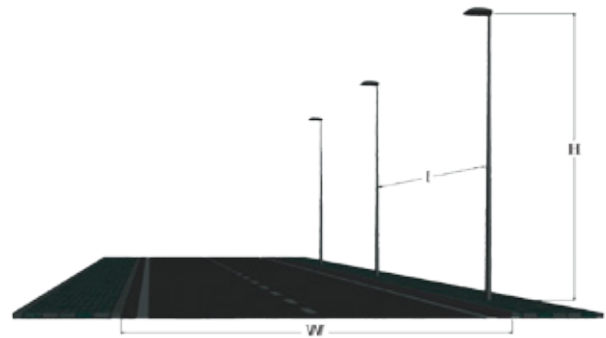


4528558

BEAM ANGEL	Batwing
DIMENSIONS	520 X 220 X 100 mm
COLORS	Dark Grey
DIFFUSER	Tempered Glass
POWER SUPPLY	Electronic Driver
REPLACE MODEL	LIT-ROAD S50

CODE	LED LUMEN	LUMINAIRE LUMEN	EFFICIENCY	LED WATTAGE	COLOR TEMPERATURE	NOTES
4528558	6180lm	5460lm	109lm/w	50.1W	4000K	
4518588	4380lm	3870lm	120lm/w	32.2W	4000K	Dimmable 1-10V
4528588	6180lm	5460lm	109lm/w	50.1W	4000K	Dimmable 1-10V
4528598	6180lm	5460lm	109lm/w	50.1W	4000K	IP67 Driver

- W:** STREET WIDENESS (M)
- I:** POLES INTERDISTANCE (M)
- H:** POLE HEIGHT (M)
- LM:** AVERAGE LUMINANCE (CD/M2)
- U0:** GENERAL UNIFORMITY
- UI:** LONGITUDINAL UNIFORMITY
- TTI:** GLARE FACTOR (%)
- TIL:** INCLINATION ANGLE (X°)



W	I	H	LM	U0	UI	TTI	TIL	CLASSE
6m	22m	5m	0.9	0.4	0.43	12	15°	M5
	18m	5m	1.1	0.49	0.62	11	15°	M3
8m	27m	6m	0.58	0.36	0.44	10	15°	M5
	20m	6m	0.78	0.43	0.67	8	15°	M4
	15m	6m	1.05	0.48	0.76	7	15°	M3
10m	24m	8m	0.5	0.49	0.7	6	15°	M5
	16m	8m	0.75	0.52	0.9	5	15°	M4