

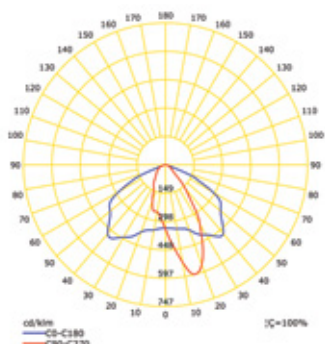
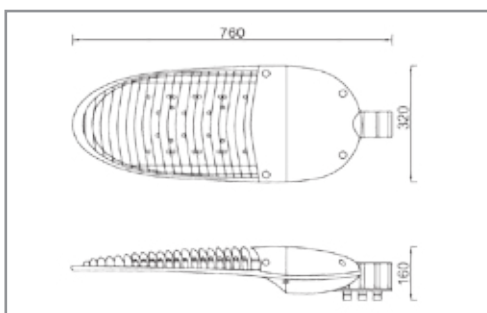
LIT-34200



Range of high-performance public lighting luminaires designed and created for use with LED light sources. Thanks to their compact shape, modern design, high photometric performance, availability of different power levels and different color temperatures. Die-cast Aluminium body

APPLICATIONS

Street lighting, Parking, etc...

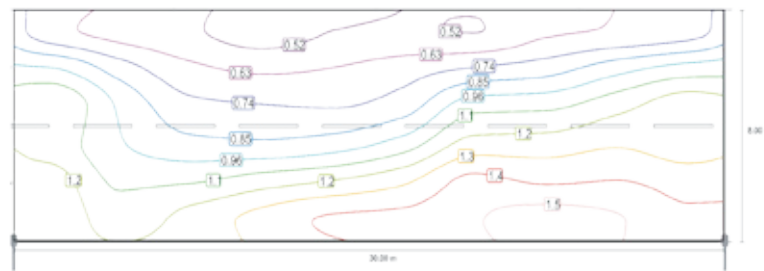
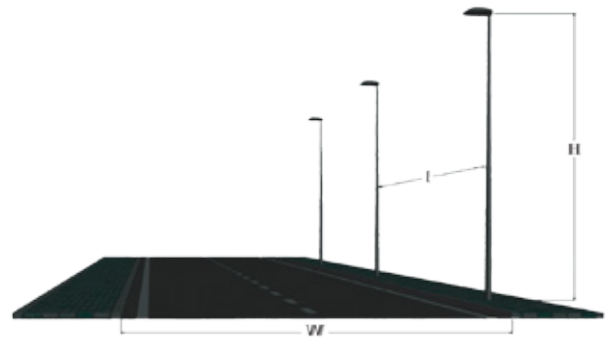


4528558

BEAM ANGEL	Batwing
DIMENSIONS	760 X 320 X 160 mm
COLORS	Dark Grey
DIFFUSER	Tempered Glass
POWER SUPPLY	Electronic Driver
REPLACE MODEL	LIT-ROAD S100

CODE	LED LUMEN	LUMINAIRE LUMEN	EFFICIENCY	LED WATTAGE	COLOR TEMPERATURE	NOTES
4548558	12360lm	11105lm	110.8lm/w	100.2W	4000K	
4538588	8760lm	7870lm	122.2lm/w	64.4W	4000K	Dimmable 1-10V
4548588	12360lm	11105lm	110.8lm/w	100.2W	4000K	Dimmable 1-10V
4548598	12360lm	11105lm	110.8lm/w	100.2W	4000K	IP67 Driver

- W:** STREET WIDENESS (M)
- I:** POLES INTERDISTANCE (M)
- H:** POLE HEIGHT (M)
- LM:** AVERAGE LUMINANCE (CD/M2)
- U0:** GENERAL UNIFORMITY
- UI:** LONGITUDINAL UNIFORMITY
- TTI:** GLARE FACTOR (%)
- TIL:** INCLINATION ANGLE (X°)



W	I	H	LM	U0	UI	TTI	TIL	CLASSE
6m	36m	8m	0.96	0.43	0.4	9	1°	M5
	32m	8m	1.02	0.55	0.61	8	7°	M3
8m	36m	8m	0.84	0.38	0.46	10	5°	M5
	30m	8m	1	0.46	0.65	8	5°	M3
10m	36m	8m	0.7	0.4	0.46	11	12°	M5
	32m	8m	0.8	0.46	0.65	10	12°	M4
	25m	8m	1.02	0.47	0.83	8	12°	M3
12m	36m	8m	0.63	0.37	0.48	12	15°	M5
	30m	8m	0.76	0.4	0.74	10	15°	M4
	22m	8m	1.03	0.44	0.79	18	15°	M3