

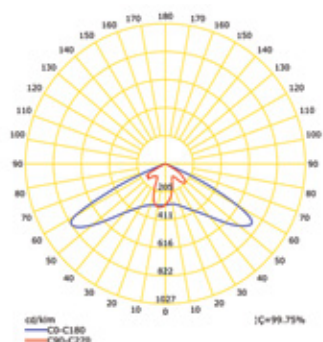
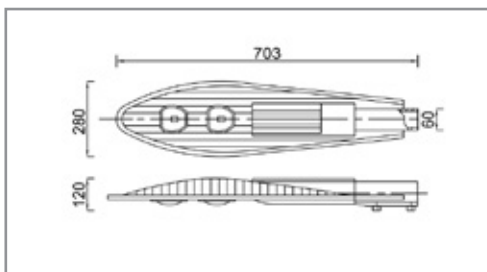
LIT-34400



Range of high-performance public lighting luminaires designed and created for use with LED light sources. Thanks to their compact shape, modern design, high photometric performance, availability of different power levels and different color temperatures. Die-cast Aluminium body and cover with polyester powder coating after phospho-chromatation treatment.

**APPLICATIONS**

Street lighting, Parking, etc...

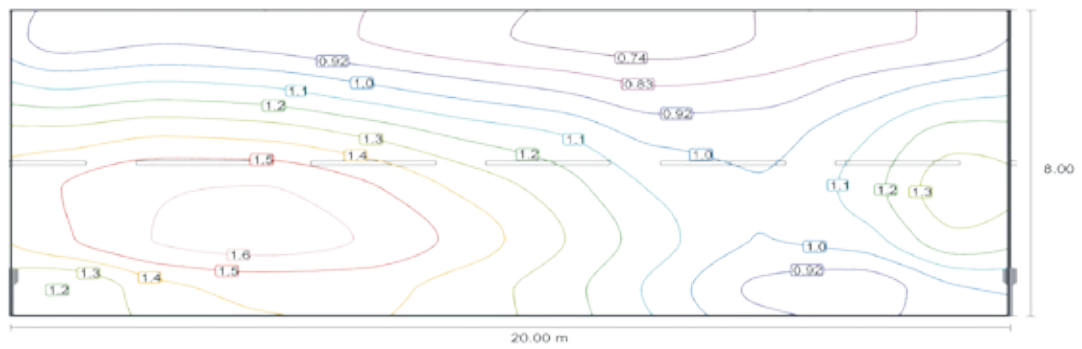
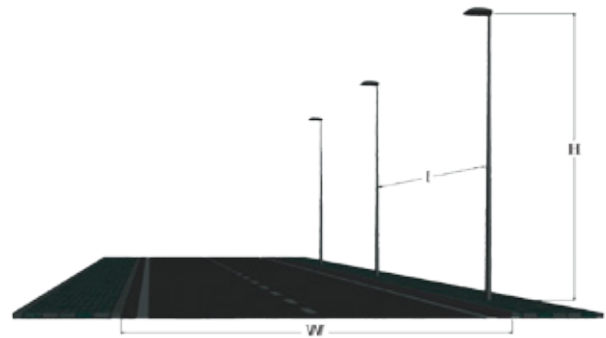


4555568

LUMEN, MAINTENANCE & FAILURE RATE	L90/ B10 >80,000 hrs
BEAM ANGEL	Batwing
DIMENSIONS	703 X 280 X 120 mm
COLORS	Dark Grey
DIFFUSER	Tempered Glass
POWER SUPPLY	Electronic Driver
REPLACE MODEL	LIT-ROAD 150

CODE	LED LUMEN	LUMINAIRE LUMEN	EFFICIENCY	LED WATTAGE	COLOR TEMPERATURE	BEAM ANGEL
4555567	14766lm	12907lm	129.8lm/w	99.4W	3000K	Batwing
4555568	15548lm	13588lm	136.7lm/w	99.4W	4000K	Batwing

- W:** STREET WIDENESS (M)
- I:** POLES INTERDISTANCE (M)
- H:** POLE HEIGHT (M)
- LM:** AVERAGE LUMINANCE (CD/M2)
- U0:** GENERAL UNIFORMITY
- UI:** LONGITUDINAL UNIFORMITY
- TTI:** GLARE FACTOR (%)
- TIL:** INCLINATION ANGLE (X°)



W	I	H	LM	U0	UI	TTI	TIL	CLASSE
6m	28m	12m	0.88	0.49	0.41	1	15°	M5
	20m	12m	1.23	0.65	0.62	1	15°	M3
8m	28m	12m	0.81	0.51	0.41	1	15°	M5
	20m	12m	1.14	0.61	0.63	1	15°	M3
10m	28m	12m	0.75	0.42	0.41	1	15°	M5
	20m	12m	1.04	0.5	0.62	1	15°	M3
12m	28m	12m	0.68	0.35	0.41	1	15°	M5
	19m	12m	1	0.41	0.68	1	15°	M3